

The Gatesbield Development Fund

The Gatesbield Development Fund was established to mark our 30th anniversary. It supports the development of property by Gatesbield to enhance the facilities offered to our tenants and to ensure that we continue to meet their changing needs. The Fund raised a significant portion of the cost of our successful 'Improving Access' project, which was completed in early 2015 and greatly improved accessibility to and facilities within Gatesbield House.

We are now embarking on an ambitious project to provide additional apartments through the conversion of Craft Cottage.

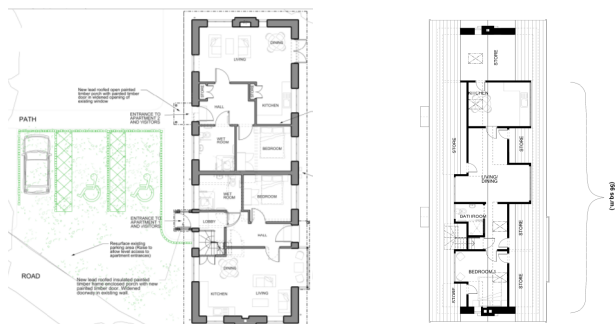
The Craft Cottage Development project

The Craft Cottage Development project aims to create three additional sheltered housing apartments to extra care standards (two fully accessible).

These new apartments will enable us to reduce our waiting list and address unmet need for this type of housing in the local area*. The income from the three additional apartments will also secure Gatesbield's long-term financial viability while enabling us to keep rents for all our Tenants as affordable as possible.

The new units will be allocated to applicants on the same basis as our existing flats (namely to Quakers and local people in equal measure).

* Cumbria County Council - Extra Care Housing and Supported Living Strategy



We have well-developed plans, which are available to view at Gatesbield. Our aim is to build sustainably and create three high quality, apartments, retaining key features from the past and respecting the character and style of the building and the Gatesbield site.

A message from our Chair, Mary Robinson

Gatesbield grew from the generosity of Stanley Davies and his wife Emily. They acted from their Quaker belief in right stewardship of possessions and envisioned the potential of their home and lovely gardens for sheltered housing for older people. Gatesbield Quaker Housing Association still strives to be both a good steward and to look forward. We now need assistance to ensure that our premises continue to meet changing requirements. It is our hope that you will join us in these efforts.

Facts and Figures - 'Craft Cottage Development Project'

What it will cost and how much we need to raise (as of September 2017)

Total estimated costs	£296,000
Amount already promised	£ 27,100
Amount still to raise	£268,900

yes!

I would like to support the
Gatesbield Development Fund

You can make a single gift or give regularly by Standing Order. It is also possible to gift shares. You might want to include Gatesbield in your Will.

I want to make a single gift

- £1000 £500 £250 £100 £50
 £20 Other amount £
 I enclose a cheque for £

Cheques should be payable to Gatesbield Quaker Housing Association Ltd

- I enclose a CAF cheque for £
 I wish to use online/phone banking.
Pay Gatesbield Quaker Housing Association Ltd
Sort Code 09-07-23 Account No 13292981
 I wish to make my donation using Gift Aid and have signed the declaration below.

Your Full Name

Your Address (inc. postcode)

Make your Gift worth more by Gift Aid.

Boost your donation by 25p of Gift Aid for every £1 you donate. Gift Aid is reclaimed by Gatesbield from the tax you pay for the current tax year. Your address is needed to identify you as a current UK taxpayer. Simply sign the following declaration (for single donations).

I want to Gift Aid my donation to Gatesbield Quaker Housing Association Ltd. I am a UK taxpayer and understand that if I pay less Income Tax and/or Capital Gains Tax in the current tax year than the amount of Gift Aid claimed on all my donations it is my responsibility to pay any difference. Please notify Gatesbield if you want to cancel this declaration, change your name or home address or no longer pay sufficient tax on your income and/or capital gains. If you pay Income Tax at the higher or additional rate and want to receive the additional tax relief due to you, you must include all your Gift Aid donations on your Self-Assessment tax return or ask HM Revenue and Customs to adjust your tax code.

Signed

Date

Ensure that your full name and address are completed above